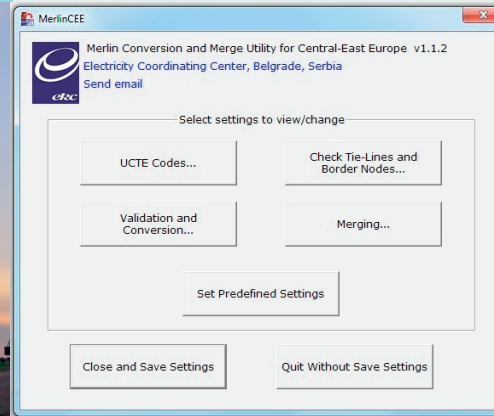




# Merlin Conversion & Merge Utility

conversion and merging utility **software**



## Supported formats:

- |                            |                |
|----------------------------|----------------|
| UCTE data exchange format  | PTI raw format |
| • UCTE-DEF 02 (2007.05.01) | • Version 32   |
| • UCTE-DEF 01 (2003.09.01) | • Version 31   |
|                            | • Version 30   |
|                            | • Version 29   |

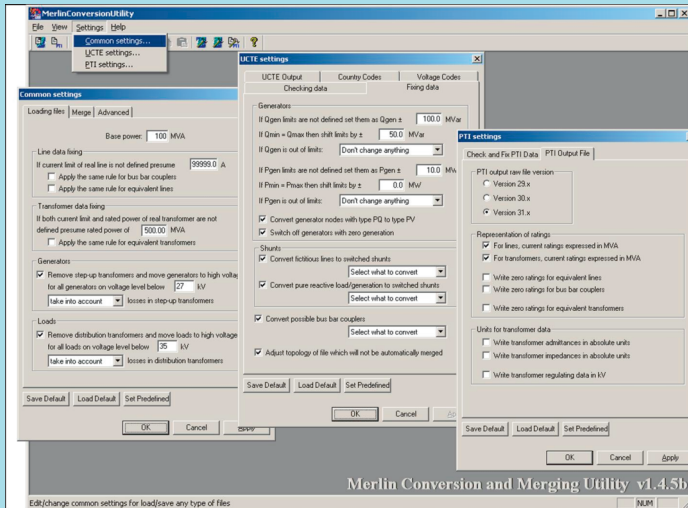
- Converting from UCTE format data to PTI raw format data and vice versa;
- Converting between different versions of UCTE format data;
- Converting between different versions of PTI raw format data;
- Merging several models (UCTE format data and/or PTI raw format data) into one UCTE format data as well as into one PTI raw format data;
- Checking and fixing found problems in the UCTE format input data;
- Checking and fixing found problems in the PTI raw format input data.

The ENTSO-E (UCTE) Secretariat recommends the software for everyday usage in companies that work in the field of power system operation and analyses.



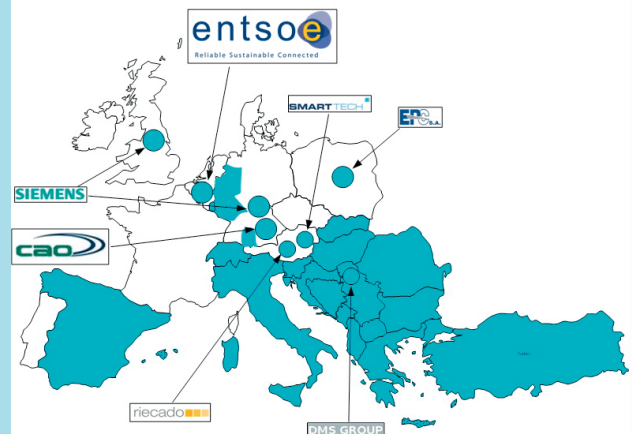
Useful for companies which use:

- ▶ PSS/E
- ▶ PSLF
- ▶ other software which support PTI or UCTE



- User friendly
- A lots of options
- Detailed reports
- Continuous updating
- Adjusting to requirements of users
- Quick response to user's requirements

**Merlin Conversion & Merge Utility**  
by EKC  
Software usage



- Everyday usage in the ENTSO-E Secretariat
- Everyday usage in several TSOs in Europe
- Important role in IPS/UPS project
- Used in other regional projects

**Clients with professional license:**

- **ENTSO-E Secretariat**
- **CAO Freising** (Germany)
- **OST** (TSO in Albania)
- **NOS** (TSO in Bosnia and Herzegovina)
- **Amprion** (TSO in Germany)
- **IPTO** (TSO in Greece)
- **MEPSO** (TSO in Macedonia)
- **CGES** (TSO in Montenegro)
- **SEPS** (TSO in Slovakia)
- **REE** (TSO of Spain)
- **TEIAS** (TSO in Turkey)
- **USAID**
- **DMS Group** (Consulting company, Serbia)

**Clients with limited license:**

- **ESO** (TSO in Bulgaria)
- **HEP-TSO** (TSO in Croatia)
- **MAVIR** (TSO in Hungary)
- **TERNA** (TSO in Italy)
- **TEL** (TSO in Romania)
- **EMS** (TSO in Serbia)
- **ELES** (TSO in Slovenia)
- **SWISSGRID** (TSO in Switzerland)
- Siemens PTI office in UK
- Siemens PTI office in Germany
- Riecado (Consulting company, Austria)
- SmartTech (Consulting company, Austria)
- EPC (Consulting company, Poland)



Electricity Coordinating Center Ltd.  
Vojvode Stepe 412  
PO BOX 50  
11040 Belgrade  
SERBIA

Tel. +381 11 397 42 73  
Fax +381 11 397 18 13

e-mail gm@ekc-ltd.com  
www.ekc-ltd.com

